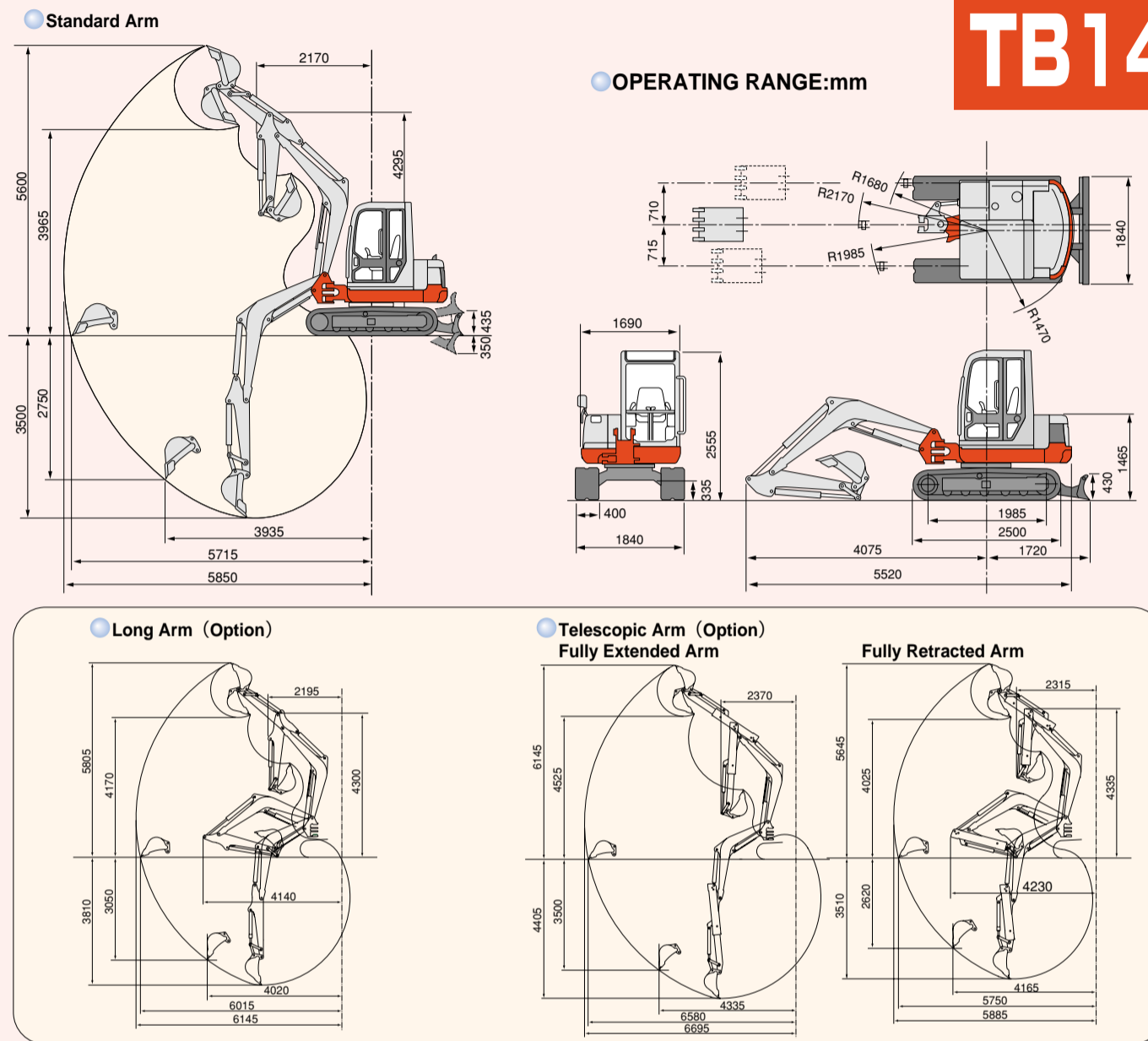




# TB145

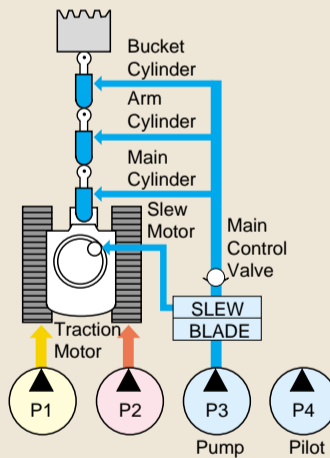
# TAKEUCHI TB145



### SPECIFICATIONS TB145 (Cab, Rubber Tracked, Breaker Piping Standard) (Steel Tracked: Option) (Tops/Fops Cabin/Canopy For Export)

<b>WEIGHT:</b> kg	Machine Weight	4,740(4,825)	Rear Slew Radius	1,470	<b>OPERATING RANGE:</b> mm	Max. Dig. Depth	3,500	
<b>BUCKET</b>	Bucket Capa. m <sup>3</sup>	0.102(Struck)/0.141(Heaped)	Min. Ground Clearance	335	Max. Vertical Dig. Depth	2,750	Max. Dump Height	3,965
	Bucket Width mm	640	<b>PERFORMANCES</b>		Max. Dig. Height	5,600	Max. Dig. Radius	5,850
	<b>DIESEL ENGINE (WATER-COOLED)</b>		Traction Speed km/h	2.8/4.7(2.6/4.3)	Max. Floor Dig. Radius	5,715	Min. Slew Radius	1,685
	Model	4TNV88	Gradeability deg/%	30/58	Max. Bucket Offset R/H/LH	710/715		
	Type	4CYL.4CYCL	Max. Dig. Power Bucket kN	36.5				
	Rated Output kW	27.3/2,300min <sup>-1</sup>	Arm kN	25.4	<b>HYDRAULIC SYSTEM</b>			
	Max. Torque Nm	138.3	Ground Press kPa	27.3(30.3)	Pump Type	Variable(P1+P2)+Gear(P3+P4)		
	Displacement ml	2,189	<b>DOZER BLADE:</b> mm		Set Press	20.6×2+19.6×1+3.4×1		
	Cool Water Capa. lit	5.4	Type	Boom Swing	Discharge l/min	55.9×2+37.3×1+10.4×1		
	Lub. Oil Capa. lit	7.4	Width × Height	1,840×430	Breaker & Service Port l/min	59(LPM)		
	Fuel Tank Capa. lit	74	Operating Range up/down	435/350	Slew Motor	Axial Piston		
<b>OVERALL DIMENSIONS:</b> mm			<b>OFF-SET DIG FUNCTION</b>		Traction Motor	Axial Piston		
Length (in transport)	5,520		Swing Angle R/H/LH	60/80	Hydraulic Tank Capa. lit	74		
Width	1,840		<b>TRACTION SYSTEM:</b> mm					
Height	2,555		Crawler (Track)	Rubber/Steel				
			Track Width : RT (ST)	400(380)				

**VARIABLE DISPLACEMENT, AXIAL PISTON, HYDRAULIC PUMPS WITH POWER SHIFT** enable system flows and pressures to vary according to the load placed on the hydraulic system. The hydraulic system puts to work all of the available engine horsepower for maximum operating efficiency. The optimal combination of high digging forces and fast cycle times are continuously adjusted according to the variable digging loads encountered by the excavators.

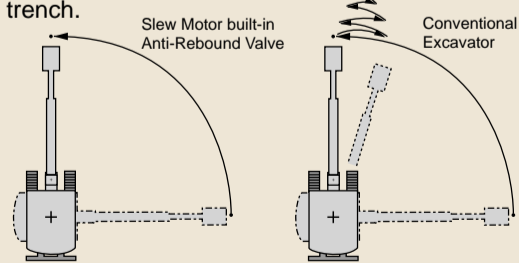


**SIMULTANEOUS NON-INTERFERING HOE & TRAVEL OPERATION** is now possible due to new technology. Straight Travel in normal Speed is kept even if two of hoe attachment actuators, such as Main, Arm, Bucket, are operated Simultaneously.  
 P1---Traction(LH)  
 P2---Traction(RH)  
 P3---Main, Bucket, Arm.  
 (P4--- Pilot)

All Simultaneous Movements are operated smoothly in comfortable conditions.

**IMPROVED SIMULTANEOUS OPERATION OF THE BOOM AND BUCKET** decrease cycle times. There is no reduction in operating speed as the machine is slewed away from and back to the trench.

**SLEW MOTOR BUILT-IN ANTI-REBOUND VALVE** minimizes rebound action at slew/swing stop and gives precise bucket positioning with minimal dirt loss in bucket.



## WORLD CREATOR OF COMPACT EXCAVATOR TAKEUCHI MFG.CO.,LTD.

205-3, Uwadaira, Sakaki-machi, Hanishina-gun,  
 Nagano 389-0605, Japan  
 Phone (81)268-81-1112  
 Telefax (81)268-81-1121  
 URL <http://www.takeuchi-mfg.co.jp>  
 E-mail [marketing@takeuchi-mfg.co.jp](mailto:marketing@takeuchi-mfg.co.jp)



In accordance with our established policy of constant improvement, we reserve the right to amend this specification at any time without notice. Printed in Japan. TK 040330



FULL HYDRAULIC COMPACT EXCAVATOR

# TB145

Machine Weight:4740kg

TAKEUCHI

# TAKEUCHI ... Leading the Way in Compact Excavators

The new model TB145 excavator is the end result of years of research, field testing, customer evaluation and product refinement. Designed and engineered from the "ground up" with the latest in compact equipment technology, they firmly establish new standard for excavator performance, reliability, efficiency and ease of operation.

## Operator Comfort

■ **AN ISOLATION MOUNTED PLATFORM** minimizes noise levels in the operators station for less operator fatigue and improved awareness of the machines operating functions.

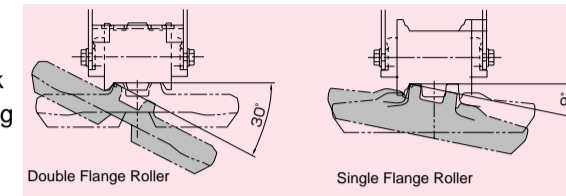
■ **MULTI-ADJUSTABLE SUSPENSION SEAT** provides for long days productive operation with minimal operator fatigue.



■ **SHORT PITCH RUBBER TRACKS** make for comfortable vibration free travel even on the roughest job sites.



■ **DOUBLE-FLANGED TRACK ROLLERS** provide increased roller/rail contact. Stress on the rail is more evenly distributed for longer undercarriage life and the risk of track run-off when operating on slopes is virtually eliminated.



## Serviceability

■ **THE OPERATORS PLATFORM** is quickly and easily raised for optimum machine serviceability. Maintenance and repair time are significantly reduced through quick and unencumbered access to the starter, alternator, battery, engine oil filter, slew motor and reduction unit, swivel joint, main control valve and hoses.

■ **A GREASE GUN STORAGE COMPARTMENT** is provided to help insure proper maintenance.



## Environmental Sensitivity

■ **NEW SERIES ENGINES** significantly reduce noise emission levels for minimal disturbance in urban areas and comply with the most stringent Worldwide exhaust emission standards.



## Ease of Operation

■ **ELECTRO OVER HYDRAULIC CONTROL OF THE AUXILIARY HYDRAULIC CIRCUIT** is located at the left hand(LH) joystick control for convenient and comfortable operation of hydraulic attachments.



■ **A RETRACTABLE SEAT BELT** insures easy operator access, and eliminates bothersome adjustments to properly fit the operator. Neatly stored seat belts encourage operator utilization of this critically important safety feature.



■ **AN EMERGENCY ENGINE SHUT DOWN SYSTEM** stops the engine in the event of an abnormal decrease in engine lubrication pressure. An important feature which helps eliminate catastrophic engine failures due to abusive or unobservant operators.



■ **REAR MOUNTED WORK LIGHTS** improve job site safety conditions by visually alerting anyone entering the excavators area.

■ **DISC TYPE PARKING BRAKES, SPRING-APPLIED, HYDRAULICALLY RELEASED**, for travel and slew motors supplied as standard equipment are automatically applied when motors are not in operation.

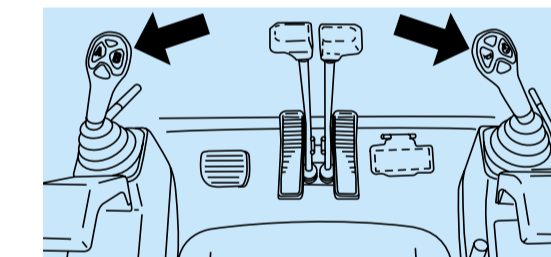
■ **BUCKET CYLINDER AND AUXILIARY CIRCUIT HOSES** are routed through the arm to virtually eliminate hose abrasion from narrow trench walls and debris.



■ Console safety lockouts disable the console mounted operating controls for safe entry and exit from the machine.

■ **A CAST IRON WRAP AROUND COUNTERWEIGHT** protects the engine compartment born accidental damage when slewing (swinging) in confined areas.

■ **A ONE TOUCH ENGINE DECELERATOR WITH RETURN TO PRESET ENGINE SPEED** is located on the right hand(RH) joystick control. It aids in reduced fuel consumption when the excavator is temporarily idle.



■ **TRAVEL SPEED SWITCH** is located at the right hand(RH)travel lever for easy change to 2nd(high) speed.



## Options

■ **TKB301 HYDRAULIC BREAKER** properly matched to the machine flow, pressure, and working capacity, enables the excavator to efficiently perform concrete breaking and demolition work.



■ **EMERGENCY ALARM EQUIPPED BOOM HOLDING VALVE** provides for maximum safety when the excavator is used craning applications or working with men in the trench.

■ **TRAVEL ALARM** is available as an optional safety precaution to audibly alert anyone in the excavators work area of any machine movement.

■ **EASY LEVER PATTERN CHANGE SELECTOR VALVE** provides for quick change of operation control patterns to accommodate operator preference.

■ **LONGER STICK ARM** is available for wider working range.

■ **TELESCOPIC ARM** is available for the longest reach to increase the working range.

■ **AIR CONDITIONER** is available when necessitated by climatic conditions to insure operator comfort and productivity.

■ **AUTOMATIC HYDRAULIC CRAWLER TENSION DEVICE** keeps proper crawler belt tension in operation and minimizes bothersome greasing up work with disposal of grease.



## Safety

